



**Electrolux**  
PROFESSIONAL

## Modular Cooking Range Line 700XP 4-Hot Square Plates Electric Boiling Top Range

ITEM # \_\_\_\_\_

MODEL # \_\_\_\_\_

NAME # \_\_\_\_\_

SIS # \_\_\_\_\_

AIA # \_\_\_\_\_



371017 (E7ECEH4Q00)

4-Hot Square Plate (2,6 kW each) electric Boiling Top

371130 (E7ECEH4Q0N)

4-Hot Square Plate (2,6 kW each) electric Boiling Top

### Short Form Specification

#### Item No. \_\_\_\_\_

To be installed on open base installations, bridging supports or cantilever systems. Four 2.6 kW square cast-iron hot plates hermetically sealed to the one-piece top. Exterior panels in stainless steel with Scotch Brite finish. One piece pressed work top in 1.5 mm thick stainless steel. Right-angled side edges to allow flush-fitting junction between units.

### Main Features

- Unit to be mounted on open base cupboards, bridging supports or cantilever systems.
- The four 2.6kW cast-iron square plates are hermetically sealed to the one-piece top.
- The special design of the control knob system guarantees against water infiltration.
- IPx4 water protection.
- Suitable for countertop installation.

### Construction

- All exterior panels in Stainless Steel with Scotch Brite finishing.
- One piece pressed 1.5 mm work top in Stainless steel.
- Model has right-angled side edges to allow flush fitting joints between units, eliminating gaps and possible dirt traps.

### Optional Accessories

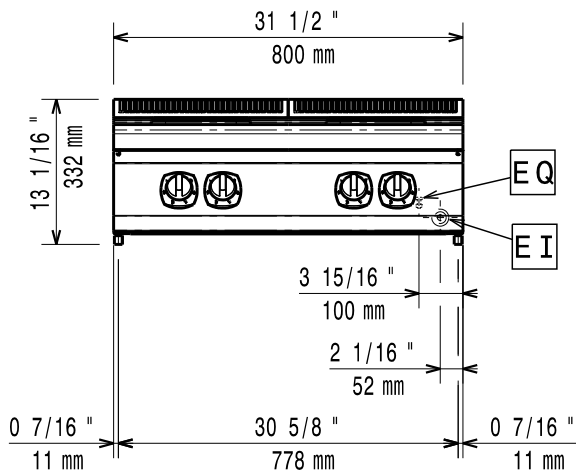
- Junction sealing kit PNC 206086 ☐
- Support for bridge type installation, 800mm PNC 206137 ☐
- Support for bridge type installation, 1000mm PNC 206138 ☐
- Support for bridge type installation, 1200mm PNC 206139 ☐
- Support for bridge type installation, 1400mm PNC 206140 ☐
- Support for bridge type installation, 1600mm PNC 206141 ☐
- 2 cast iron plate bars for electric cooking top PNC 206168 ☐
- Full size basket with holder for automatic programmable fryer (only for 371130) PNC 206196 ☐
- Water column with swivel arm (water column extension not included) PNC 206289 ☐
- Water column extension for 700 line PNC 206291 ☐
- Chimney upstand, 800mm PNC 206304 ☐
- Right and left side handrails PNC 206307 ☐
- Back handrail 800 mm PNC 206308 ☐
- Chimney grid net, 400mm (700XP/900) PNC 206400 ☐
- Frontal handrail, 800mm PNC 216047 ☐
- Frontal handrail, 1200mm PNC 216049 ☐
- Frontal handrail, 1600mm PNC 216050 ☐
- Large handrail - portioning shelf, 800mm PNC 216186 ☐
- 2 side covering panels for top appliances PNC 216277 ☐

APPROVAL: \_\_\_\_\_

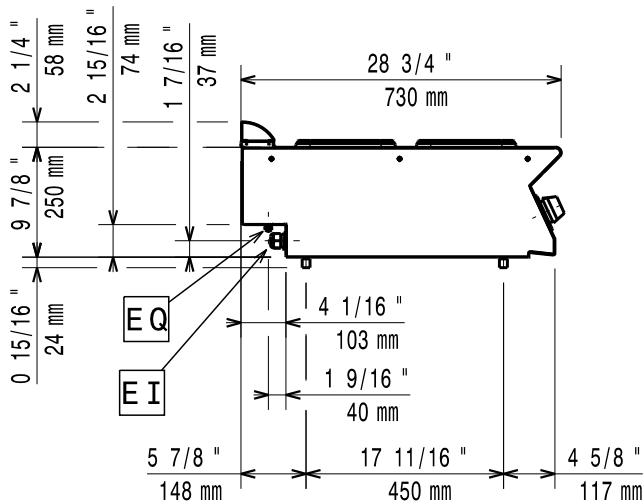


Experience the Excellence  
[www.electroluxprofessional.com](http://www.electroluxprofessional.com)

Front

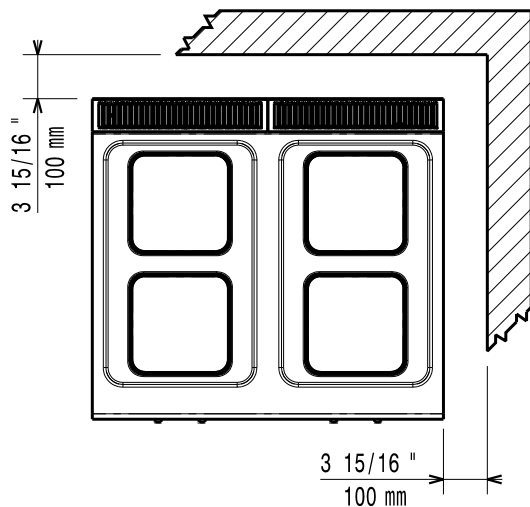


Side



EI = Electrical inlet (power)  
 EQ = Equipotential screw

Top



### Electric

#### Supply voltage:

371017 (E7ECEH4Q00)	380-400 V/3 ph/50-60 Hz
371130 (E7ECEH4Q0N)	230 V/3 ph/50/60 Hz

#### Predisposed for:

Total Watts:	10.4 kW
--------------	---------

### Key Information:

If appliance is set up or next to or against temperature sensitive furniture or similar, a safety gap of approximately 150 mm should be maintained or some form of heat insulation fitted.

**External dimensions, Width:** 800 mm

**External dimensions, Depth:** 730 mm

**External dimensions, Height:** 250 mm

**Net weight:** 40 kg

#### Shipping weight:

371017 (E7ECEH4Q00)	48 kg
371130 (E7ECEH4Q0N)	47 kg

#### Shipping height:

371017 (E7ECEH4Q00)	520 mm
371130 (E7ECEH4Q0N)	540 mm

**Shipping width:** 820 mm

**Shipping depth:** 860 mm

#### Shipping volume:

371017 (E7ECEH4Q00)	0.37 m <sup>3</sup>
371130 (E7ECEH4Q0N)	0.38 m <sup>3</sup>

#### Certification group:

371017 (E7ECEH4Q00)	EH74T
371130 (E7ECEH4Q0N)	N7CEI

**Front Plates Power:** 2.6 - 2.6 kW

**Back Plates Power:** 2.6 - 2.6 kW

**Front Plates dimensions:** 230x230 230x230

**Back Plates dimensions:** 230x230 230x230